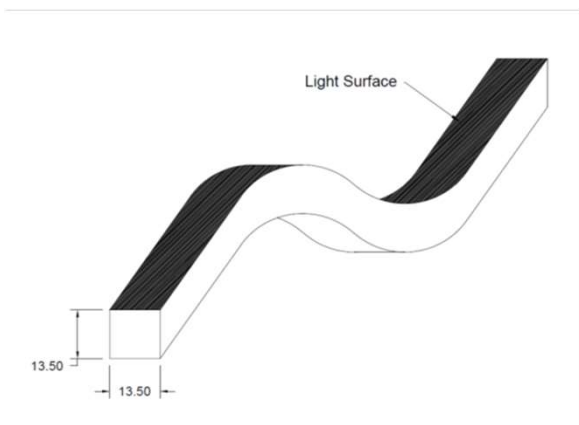




Specification

<u>Model</u>	<u>Material</u>	<u>Wattage</u>	<u>Color temp.</u>	<u>Beam Angle</u>	<u>Input</u>	<u>Application</u>
FlexiNeon10	Silicon	10 : 10w	27 : 2700k 30 : 3000k 40 : 4000k 60 : 6000k RGB : RGB RGBW : RGBW	120 : 120°	CV24 : 24Vdc	Outdoor & Underwater

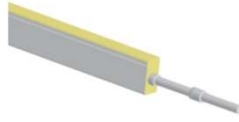
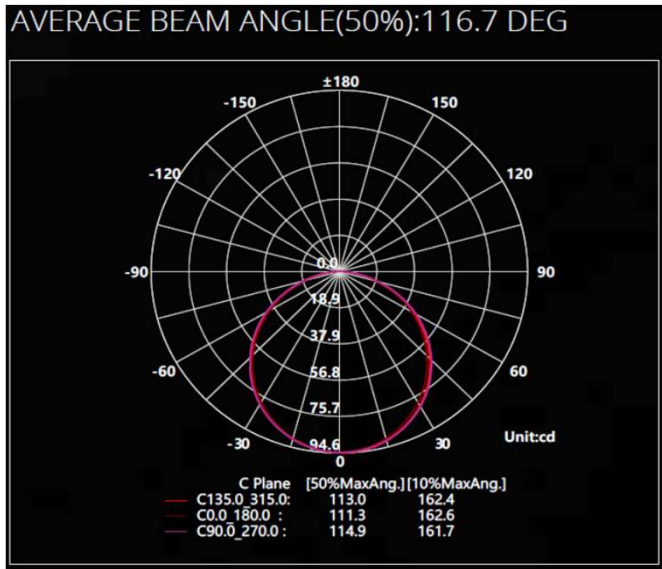
Technical information.



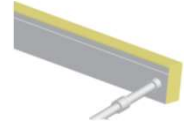
Available CT	: 2200 - 6500K
Min. Bending Radius	: Diameter 8cm
Available Colors	: R / Y / G / B / LY
Max Length Single Feed	: 10m (24Vdc & 36Vdc) 5m (12Vdc)
Max Length Double Feed	: 20m (24Vdc & 36Vdc) 10m (12Vdc)
Lumens Output	: 25 ~ 30lm per watt



Photometric



Direct Cable Entry



Side Cable Entry



Bottom Cable Entry



Stainless steel
Mounting Clip



Stainless steel Flexible Mount
Chanel @ 100cm (Max.)